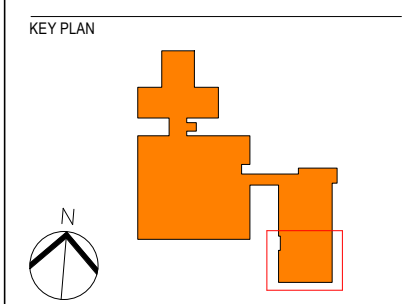


- LEGEND:**
- CLASSROOM CYLINDER SASH LOCK WITH LEVER HANDLE AND THUMB TURN
 THE TERM CLASSROOM CYLINDER SASH LOCK IS USED TO DESCRIBE A CYLINDER LOCK WITH A THUMB TURN FACILITY FROM THE INSIDE OF THE ROOM FOR UNLOCKING AND LOCKING PURPOSES.
 - PULL HANDLES, PUSH PLATE AND (CYLINDER) DEAD LOCK AND THUMB TURN
 - PULL HANDLE (TO BOTH SIDES) OPERATED MORTICE BATHROOM CASE LOCK WITH EMERGENCY RELEASE - ADDITIONAL DEAD LOCK TO FACILITATE STAFF ACCESS ONLY CONTROLS
 - EXISTING IRONMONGERY RETAINED
 - LEVER HANDLE
 - PULL HANDLE AND PUSH PLATE.
 - ACCESS CONTROLLED DOOR - PAXTON P50 READERS FOR MIFARE CARDS WITH CONTROL UNIT CONNECTED TO EXISTING NET 2 SYSTEM SERVICED BY A NETWORK PORT PATCHED TO THE SERVE ROOM (1ND FLOOR NEW BUILDING) AND INTERFACED TO THE FIRE ALARM TO AUTOMATICALLY RELEASE ON ALARM ACTIVATION
 - FINAL EXIT. REFER TO SCHOOL FIRE STRATEGY
 - LEAF SECURE FLUSH BOLT
 - NEW WALL
 - EXISTING WALL
 - NEW DOOR
 - EXISTING DOOR
 - SECURE LINE
 - PROPOSED FENCE LINE

AREA FOR PLAY SPACE = 450M2



SCALE: 1:100



PROJECT STAGE
 RIBA STAGE 2

REVISION HISTORY

REV	DATE	DESCRIPTION
P1	22.04.2022	For review from the Trust

DRAWING SUITABILITY CODE
 S3 - FOR REVIEW AND COMMENT

SCALE @ A3 DRAWN BY CHECKED BY DATE
 1 : 100 ORe RMo 22.04.2022

HKS PROJECT NUMBER
 55237.000

PROJECT NAME
 Hardingsstone Academy SEND Unit

DRAWING NAME
 IRONMONGERY STRATEGY

DRAWING NUMBER	REVISION STATUS	REVISION
55237-HKS-32-00-DR-A-1000	FOR REVIEW	P1